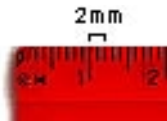
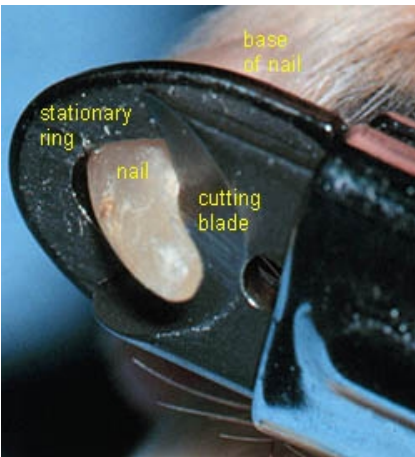


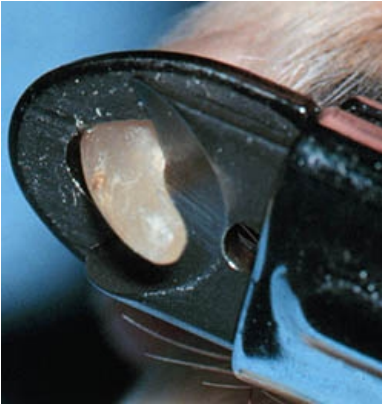
Nail Trimming of the Dog



Cut the toenail to within approximately 2 millimeters of the quick. If you cut into the quick, the toenail will bleed and the dog will experience pain.



The tip of the nail is placed in the stationary ring in the trimmer with the clipper perpendicular to the nail. The cutting blade should be facing you, **NOT** the dog. The screws on the handle of the trimmer should be facing the dog.



The handles of the trimmer are squeezed to advance the cutting blade through the nail. Light colored claws can be trimmed with one cut on each nail.



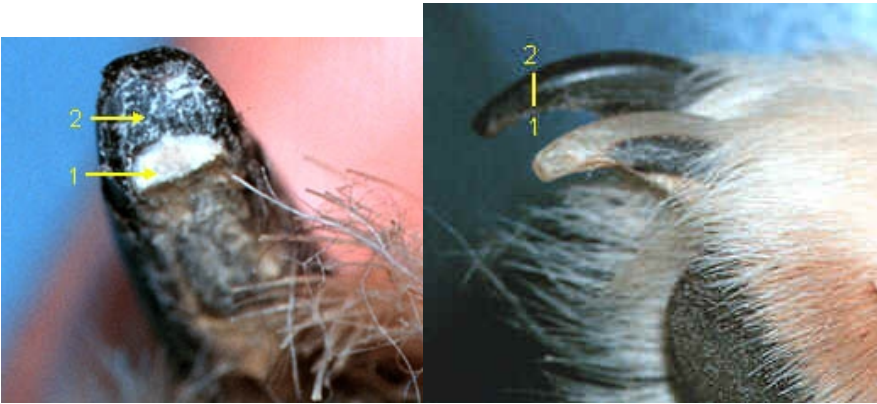
A properly cut, light colored nail.



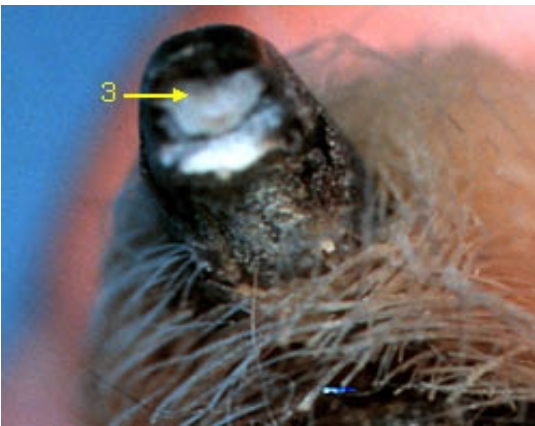
You cannot see the quick on dark colored claws, making them more difficult to trim without cutting into the quick.



Cut dark colored claws in several small cuts to reduce the chance of cutting into the quick.



As you cut off small pieces of the nail, look at the cut edge of the nail. The light tissue (1) is the curved bottom part of the nail. The mottled light and dark tissue (2) is the top part of the nail.



As you cut the nail deeper, you will see a homogeneous gray to pink oval (3) starting to appear at the top of the cut surface of the nail. Stop cutting the nail at this point as additional cutting of the nail. Stop cutting the nail at this point as additional cutting will cut into the quick. The sharper the trimmer, the cleaner the cut.

You can then file (using a human nail file made for artificial nails) or use a Dremmel® tool to smooth the cut surface.



*Adapted from the Washington State University College of Veterinary Medicine website www.wsu.edu/cvm
 Reprinted with permission from author by Trainers Academy L.L.C.
 Unauthorized reprinting or distribution is strictly prohibited.*



Trainers Academy, LLC

Below are links to two different videos we feel will be helpful to you as you train your dog to not only tolerate - but look forward to nail trims.

This first one is presented by Dr. Sophia Yin, DVM, MS author of Low Stress Handling, Restraint, and Behavior Modification of Dogs & Cats

<http://www.youtube.com/watch?v=WWZUcLfHXLE>

This next link shows another example. Listen carefully to the dog's person as she explains how things turned out when they were attempting a dominance-based approach with Tucker, then watch how in less than an hour's time using a positive reinforcement approach and scientifically sound modification techniques, amazing results with Tucker were achieved!

https://www.youtube.com/watch?v=ZiPAoiikzoA&feature=emb_logo

If you are unable to click on the links, please copy and paste the address into your web browser.



IS NAIL TRIMMING A BATTLE?

For those of you who may be losing the war, here is a great tip from *Terry Ryan, trainer and behaviorist*. As you will see, a little bit of positive reinforcement and some creative thinking can take you a long way! She calls it *Peanut Butter Therapy*.

1. Place a smear of peanut butter on a washable surface such as a refrigerator.
2. While the dog is licking, clip one nail at a time. Use lots of verbal praise as long as the dog is licking. If the dog stops licking and starts pulling his/her foot away, encourage the dog to start licking again. **USE NO NEGATIVE VERBAL OR PHYSICAL CORRECTIONS.** If the dog is totally distracted by the clipping and is unable to concentrate on the peanut butter, discontinue session and see number five below.
3. Always give the dog a chance to lick before clipping begins, in between nails and after clipping is finished.
4. It may be helpful to have a partner replenishing the peanut butter so that you can concentrate on which nail is next. If your dog is particularly squeamish, you may only have a few seconds to work while the dog is more interested in the peanut butter than in what you're doing.
5. For best results repeat PB Therapy several times per week minus the clipping, but including the foot handling.



*Reprinted with permission from author by Trainers Academy L.L.C.
Unauthorized reprinting or distribution is strictly prohibited.*